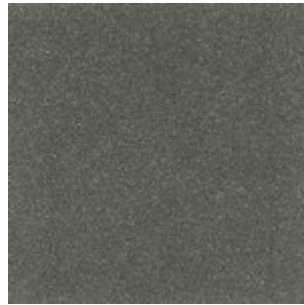


DOMUS MARBLE AGGLOMERATE - TILES, SLABS, CUT TO SIZE

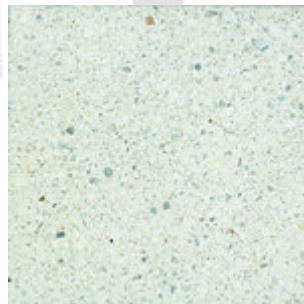
<http://www.stoneville.co.uk> Pietra Serena, Fired Earth, Lapis Lazuli, Classique, Jet Black, etc. from Stoneville

Pietra Serena



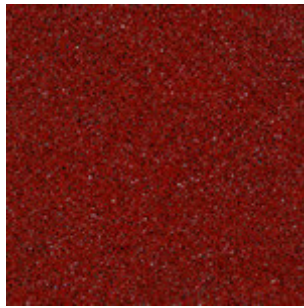
Density : 2.45-2.55 kg/dm³
Water Absorption : <0.2%
Flexural Strength: 16-35 MPa
Abrasion Resistance: 190-360 mm³
Surface Hardness: 3-4 Mohs
Coefficient of linear thermal expansion (25°C-70°C): $10-25 \times 10^{-6} \text{ m/m} \times ^\circ\text{C}$
Slip Resistance (honed 400): R9

Capitol



Density: 2.45-2.55 kg/dm³
Water Absorbtion: <0.2%
Flexural Strength: 16-35 MPa
Abrasion Resistance: 190-360 mm³
Surface Hardness: 3-4 Mohs
Coefficient of linear thermal expansion (25°C-70°C): $10-25 \times 10^{-6} \text{ m/m} \times ^\circ\text{C}$
Slip Resistance (honed 400): R9

Fired Earth



Density : 2.45-2.55 kg/dm³

Water Absorption : <0.2%

Flexural Strength: 16-35 MPa

Abrasion Resistance: 190-360 mm³

Surface Hardness: 3-4 Mohs

Coefficient of linear thermal expansion (25°C-70°C): $10-25 \times 10^{-6} \text{ m/m} \times ^\circ\text{C}$

Slip Resistance (honed 400): R9

Ceramic



Density : 2.45-2.55 kg/dm³

Water Absorption : <0.2%

Flexural Strength: 16-35 MPa

Abrasion Resistance: 190-360 mm³

Surface Hardness: 3-4 Mohs

Coefficient of linear thermal expansion (25°C-70°C): $10-25 \times 10^{-6} \text{ m/m} \times ^\circ\text{C}$

Slip Resistance (honed 400): R9

Classique



Density : 2.45-2.55 kg/dm³

Water Absorption : <0.2%

Flexural Strength: 16-35 MPa

Abrasion Resistance: 190-360 mm³

Surface Hardness: 3-4 Mohs

Coefficient of linear thermal expansion (25°C-70°C): $10-25 \times 10^{-6}$ m/m x °C

Slip Resistance (honed 400): R9

Jet Black



Density : 2.45-2.55 kg/dm³

Water Absorption : <0.2%

Flexural Strength: 16-35 MPa

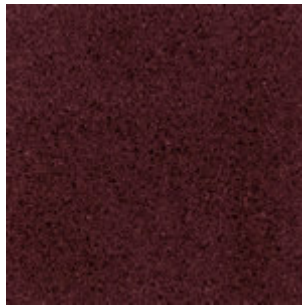
Abrasion Resistance: 190-360 mm³

Surface Hardness: 3-4 Mohs

Coefficient of linear thermal expansion (25°C-70°C): $10-25 \times 10^{-6}$ m/m x °C

Slip Resistance (honed 400): R9

Marrone



Density : 2.45-2.55 kg/dm³

Water Absorption : <0.2%

Flexural Strength: 16-35 MPa

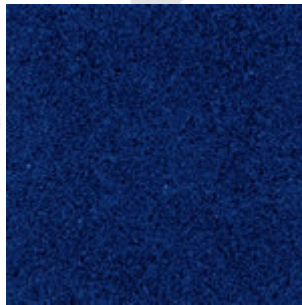
Abrasion Resistance: 190-360 mm³

Surface Hardness: 3-4 Mohs

Coefficient of linear thermal expansion (25°C-70°C): $10-25 \times 10^{-6} \text{ m/m} \times ^\circ\text{C}$

Slip Resistance (honed 400): R9

Lapis Lazuli



Density : 2.45-2.55 kg/dm³

Water Absorption : <0.2%

Flexural Strength: 16-35 MPa

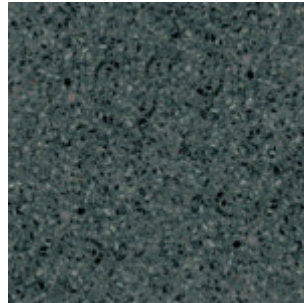
Abrasion Resistance: 190-360 mm³

Surface Hardness: 3-4 Mohs

Coefficient of linear thermal expansion (25°C-70°C): $10-25 \times 10^{-6} \text{ m/m} \times ^\circ\text{C}$

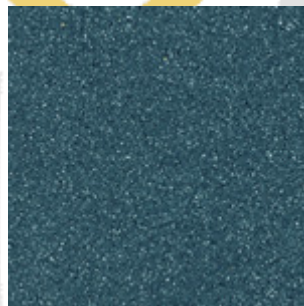
Slip Resistance (honed 400): R9

Emerald Dark



Density : 2.45-2.55 kg/dm³
Water Absorption : <0.2%
Flexural Strength: 16-35 MPa
Abrasion Resistance: 190-360 mm³
Surface Hardness: 3-4 Mohs
Coefficient of linear thermal expansion (25°C-70°C): $10-25 \times 10^{-6} \text{ m/m} \times ^\circ\text{C}$
Slip Resistance (honed 400): R9

Sea Green



Density : 2.45-2.55 kg/dm³
Water Absorption : <0.2%
Flexural Strength: 16-35 MPa
Abrasion Resistance: 190-360 mm³
Surface Hardness: 3-4 Mohs
Coefficient of linear thermal expansion (25°C-70°C): $10-25 \times 10^{-6} \text{ m/m} \times ^\circ\text{C}$
Slip Resistance (honed 400): R9

STANDARD TILES AND SLAB SIZES in cm

• 30x30x1.2	• 40x40x1.2	• 60x30x1.2
• 60x40x1.2	• 60x60x1.2	• 30x30x2
• 40x40x2	• 60x30x2	• 60x40x2
• 60x60x2	• 250x125x2	• 250x125x3
• 306x123x2	• 306x123x3	